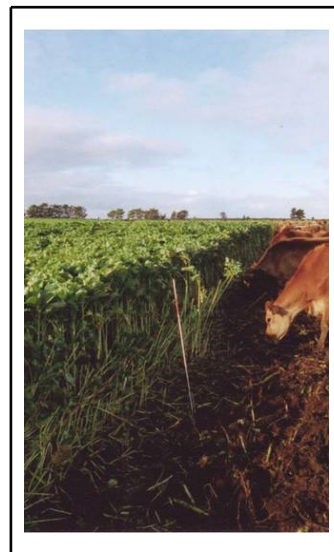




Kale - Caledonian

Brassicas

- Tall, high yielding kale
- Good quality – soft stems
- Caledonian high stem ME for a tall kale
- Winter hardy
- Club root tolerance



Using Caledonian

Sowing date: Nov - Dec
Graze: May - Aug
Maturity date: 150 220 days
Typical yield: 12-16 t DM/ha
ME: 11-12 MJ/kgDM
Sowing rate: 5 kg/ha